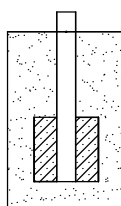
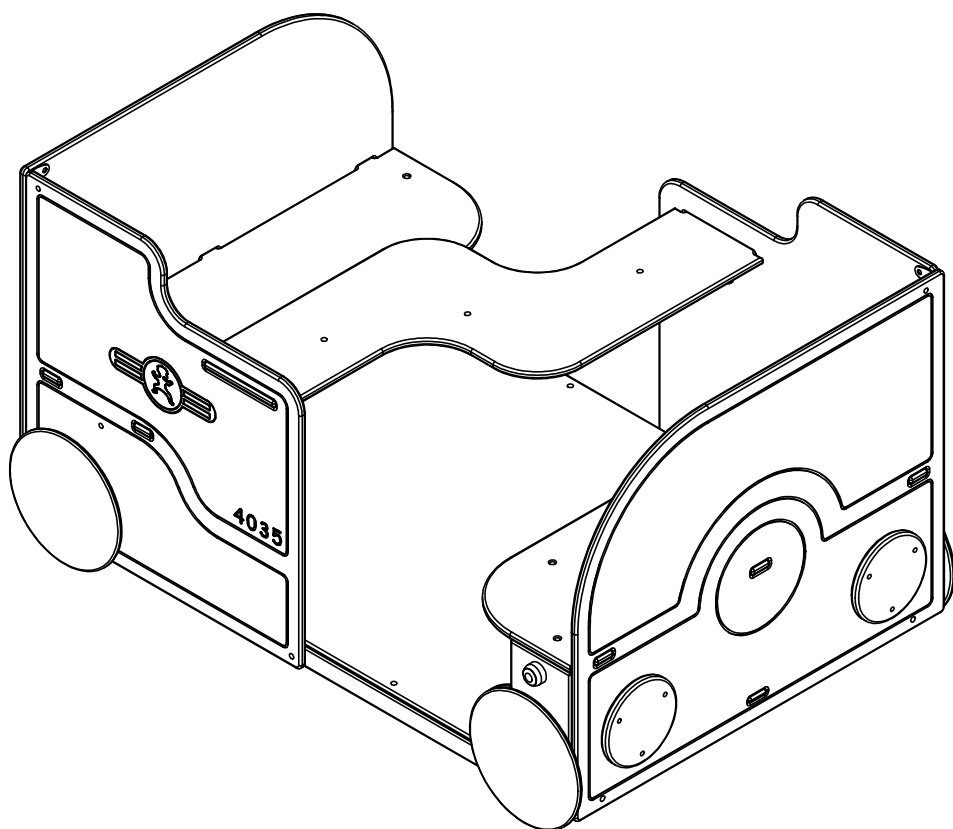
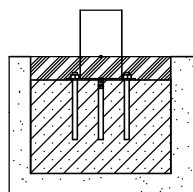




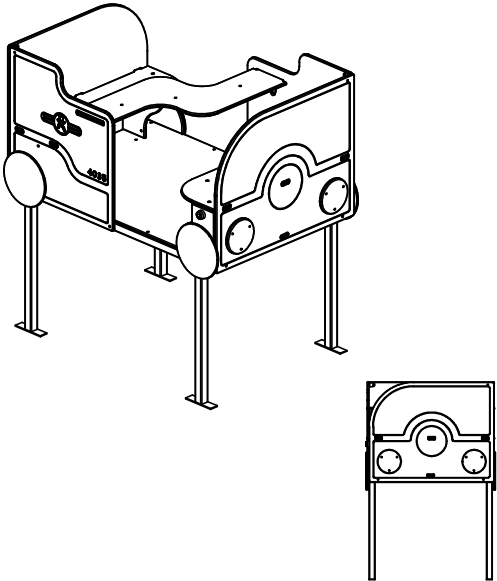
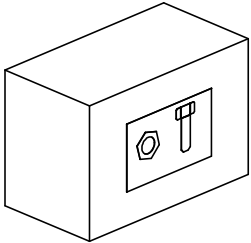
# 4035

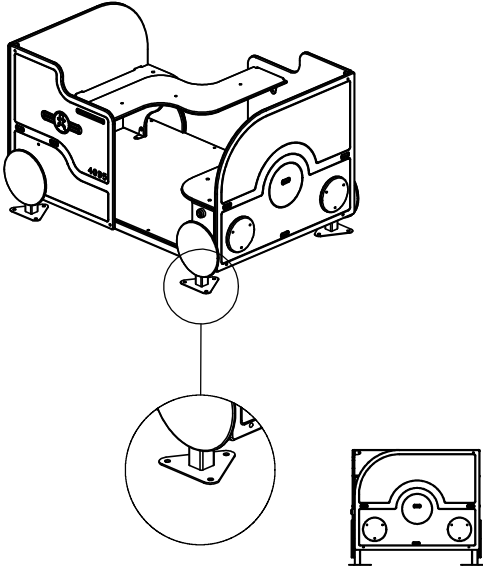
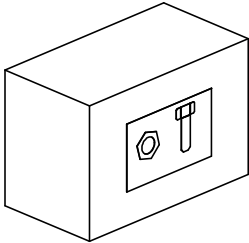


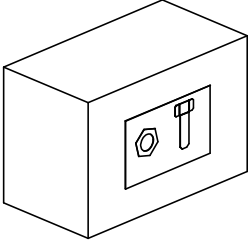




4035N



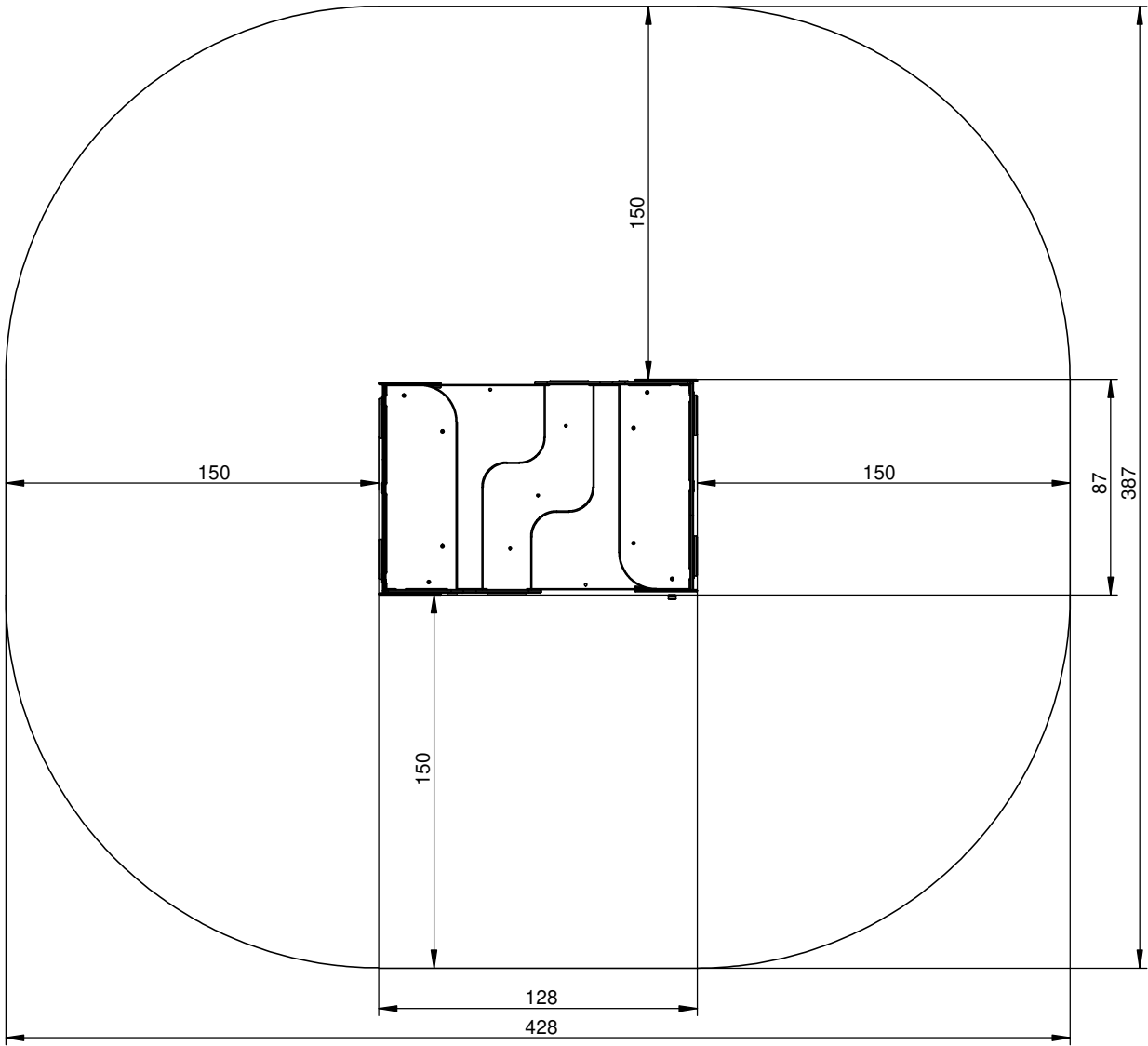
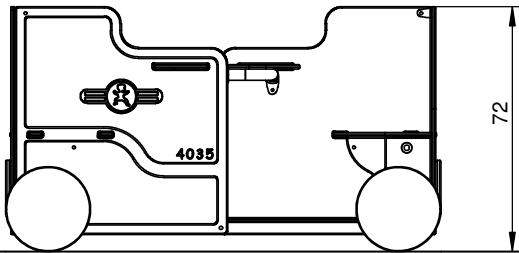
4035F

NR	ELEMENT	4035N
E1	 The image shows two views of a mechanical component labeled E1. The main view is an isometric perspective of a rectangular metal frame with four vertical legs. It features a central horizontal plate with a semi-circular cutout on the left side. On the right side, there are two circular openings. A smaller side view shows the component from the side, highlighting the semi-circular cutout and the two circular openings.	1
E2	 The image shows an isometric view of a rectangular metal component labeled E2. It has a flat top surface and a front face with a rectangular cutout. Inside this cutout, there is a circular hole and a vertical slot.	1

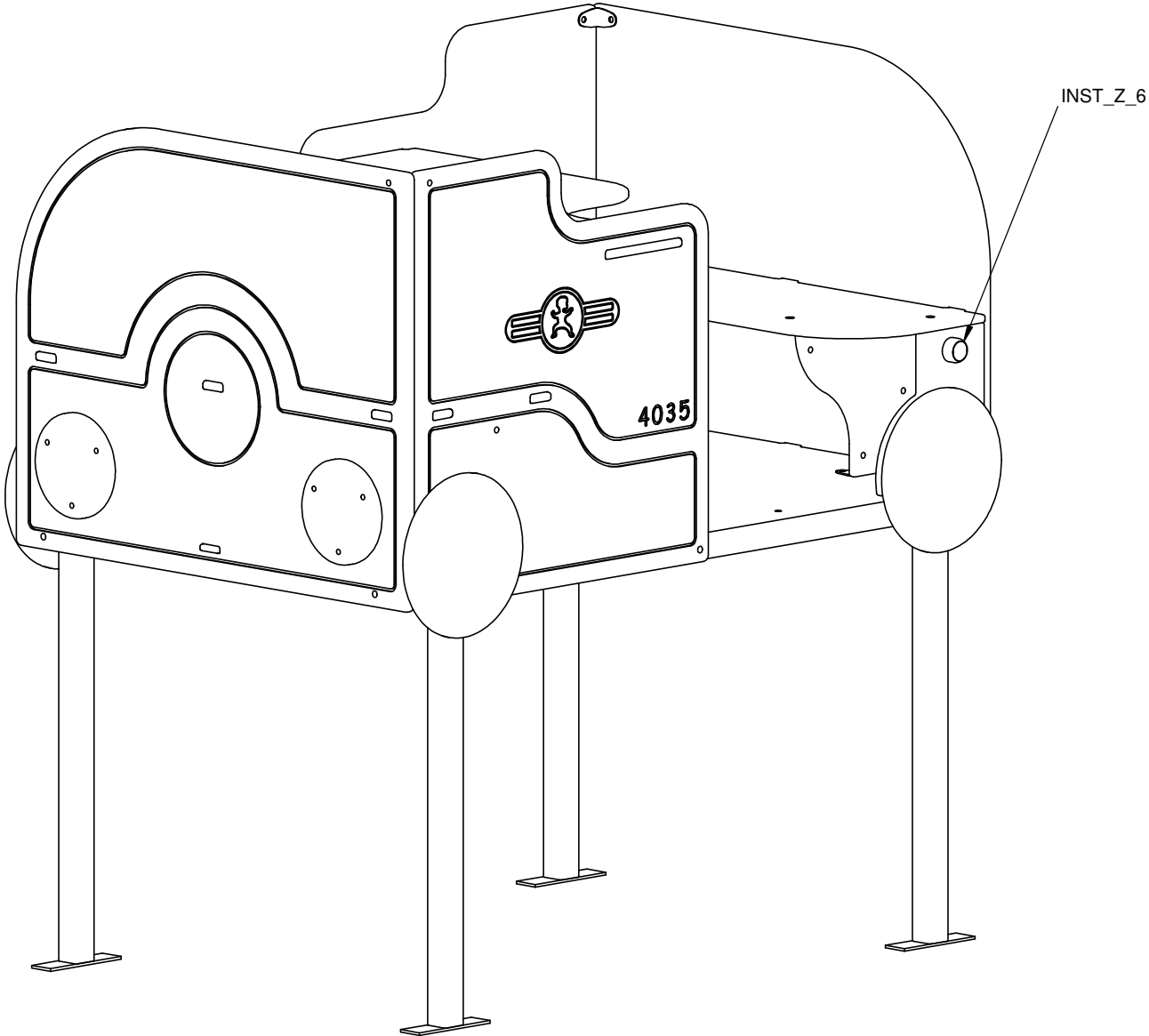
NR	ELEMENT	4035F
E1		1
E2		1

				4035N	4035F
Nr	Element			Σ	Σ
61		-	KL105		12
213		-	Z_NA_1		1
214		-	Z_NA_2		1

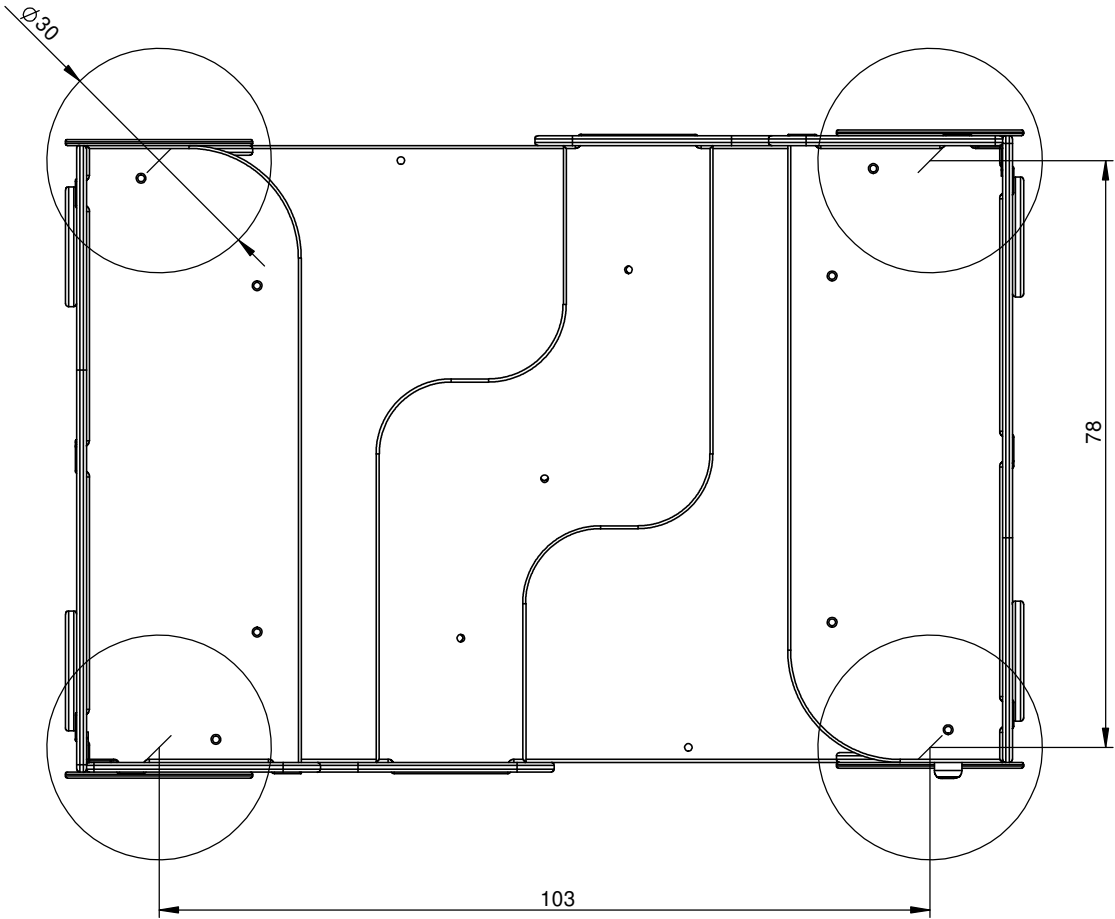
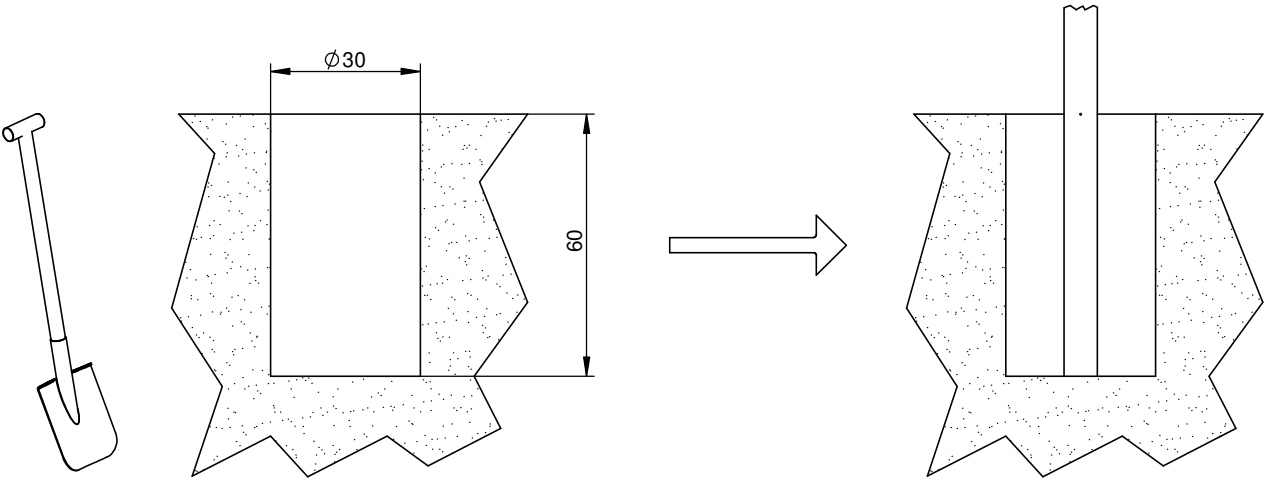
4035N  
4035F



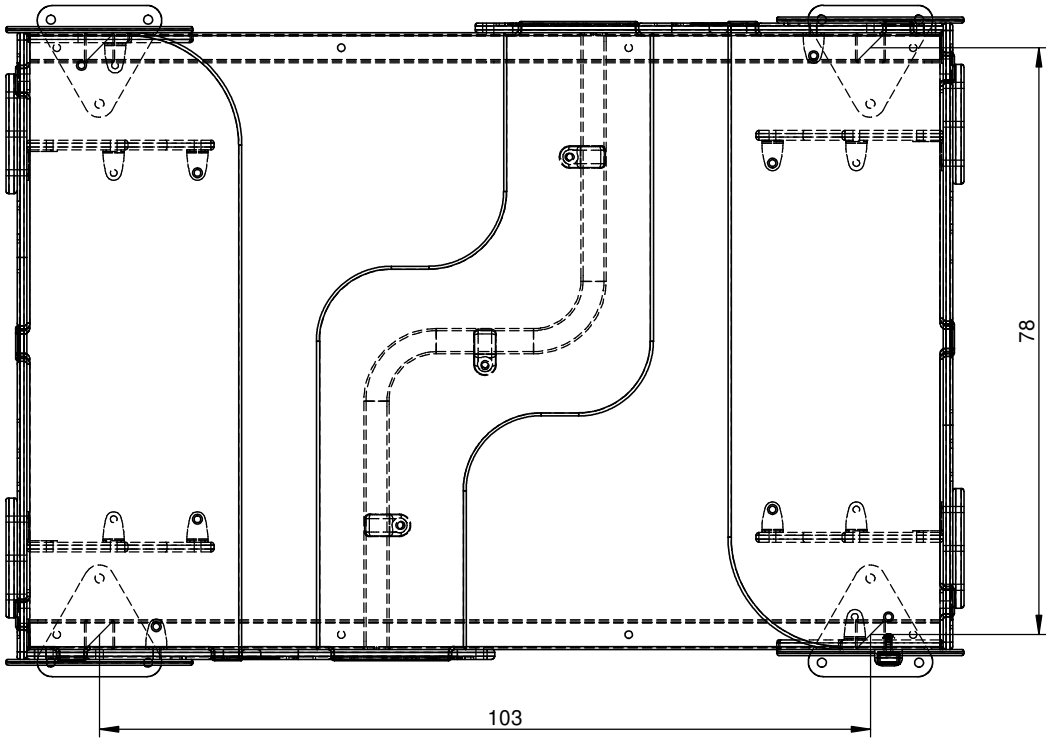
4035N  
4035F



4035N

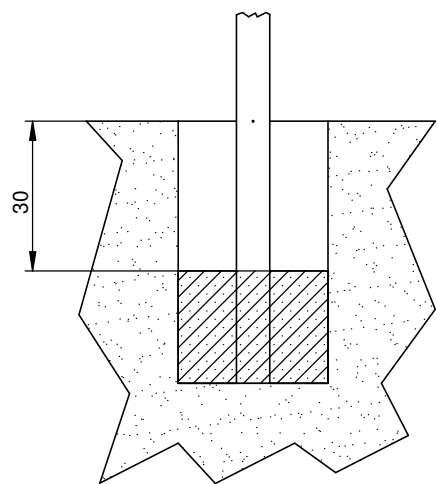
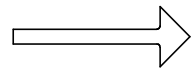
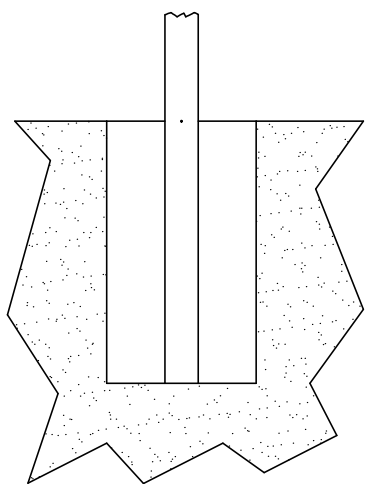
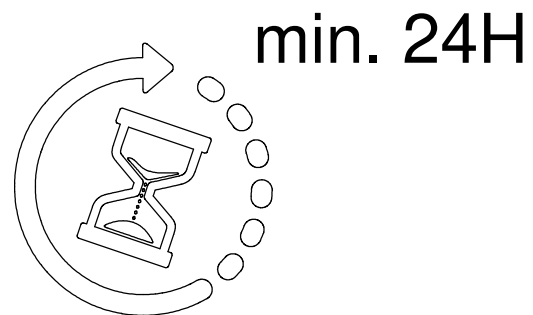
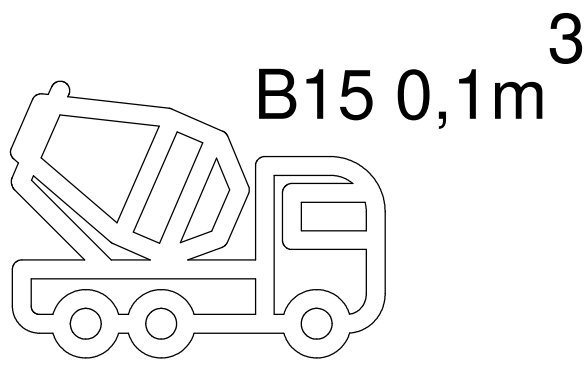


4035F




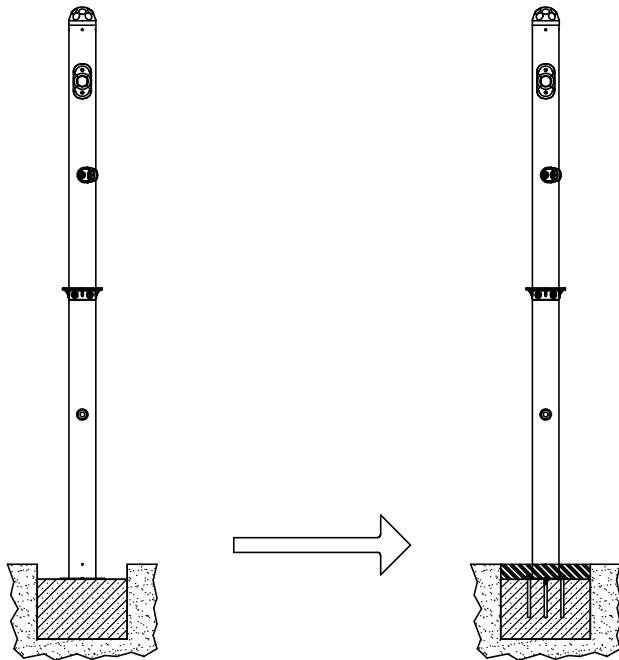


4035N



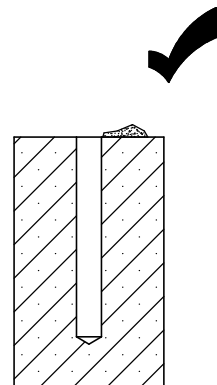
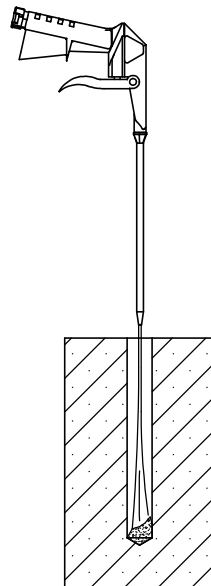
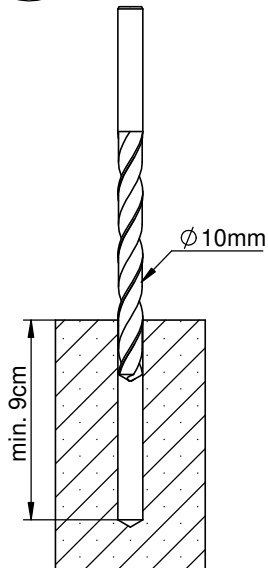
# 4035F

Nr	Element		
61		-	KL105



I

II



III

IV

V

VI

